

RAGNACUT 401 KOM

RAGNAR
WELDING



RagnaCut 401 KOM at a glance

The RagnaCut 401 KOM is a single phase inverter power source for Air Plasma Cutting process, with a unique dual use capability: **built-in compressor** and possibility to use external air compressor.

Special no-hf cutting torch with pilot arc allows **20mm maximum cuts on mild steel with external compressor**, making this model the most performant, compared to other plasma cutters on the market.

A powerful internal oil-free air compressor, is able to delivery enough air pressure for an **16mm maximum cut** on mild steel.

2 YEARS
WARRANTY

RAGNACUT 401 KOM MAIN FUNCTIONS

AIR PLASMA CUTTING

Capable of cutting the most common metals like mild steel, stainless steel, aluminium, copper, etc.

PILOT ARC

No contact torch with Pilot Arc allows cutting work pieces with holes and even grid.

IGBT INVERTER TECHNOLOGY

Differently from traditional AC transformer system, guarantees cutting edge technology in welding, specifically by providing better arc stability, lower current consumption, compact equipment size and lightweight.

MCU CONTROL SYSTEM (INTELLIGENT MACHINE CONTROL)

A built-in microprocessor for real time monitoring of the arc and machine protection detection.

GENERATOR FRIENDLY

Can be connected to Power Generators.

EXCELLENT ARC STABILITY

Smooth and reactive welding arc for superior ignition, penetration and welding quality.

LIGHTWEIGHT & PORTABLE

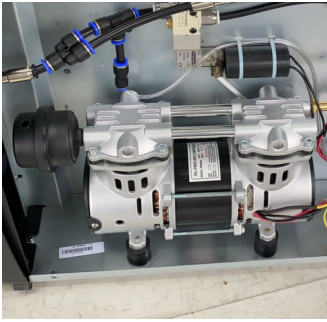
Only 630x220x407mm and 17.5Kg.

FAN COOLED

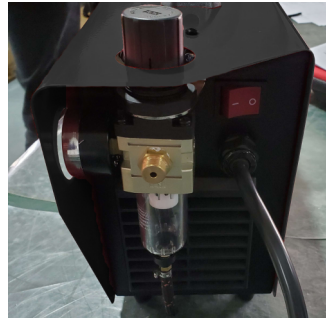
Powerful fan and special internal engineering design for efficient cooling and keeping the impurities and dust away from sensitive electronic parts.

RAGNACUT 401 KOM

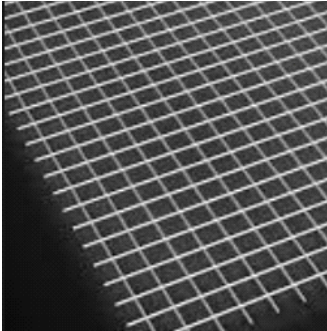
SPECIAL FUNCTIONS



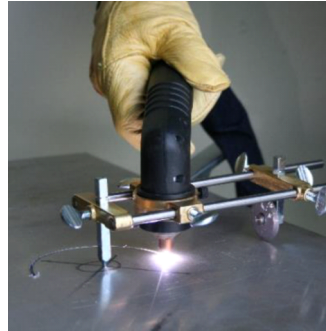
Internal compressor for extreme portability



Comes with internal and external two stage air/oil separator/filter with pressure reducer and gauge



Good cutting performance on irregular surfaces like grids



A typical circle cutting guide for Plasma (Optional)

RAGNACUT 401 KOM

TECHNICAL DATA

PARAMETERS

| | |
|---------------------------------|----------------------|
| Input power (V) | 1ph 230±10% |
| Frequency of Input voltage (Hz) | 50/60 |
| Rated input current (A) | 32.8 |
| Rated input power (KW) | 7.8 |
| Max no - load voltage (V) | 382 |
| Adjustment range of current (A) | 20-40 |
| Duty cycle (40°C, 10 minutes) | 30% 40A 100% 22 A |
| Net Weight (Kg) | 20.8 |
| Dimensions (mm) | 630*220*407 |
| Circuit breaker | JD03-A1 30A |
| Protection Class | IP21S |
| Cooling | AF |

| | | | |
|--------------------------------------|-----------------|-----|--------------|
| Severance cut for Carbon Steel (mm) | Carbon Steel | ≤12 | INTERNAL AIR |
| | Stainless Steel | ≤12 | |
| | Aluminum | ≤12 | |
| | Copper | ≤5 | |
| Severance Cut for Carbon Steel (mm) | Carbon steel | ≤20 | EXTERNAL AIR |
| | Stainless steel | ≤18 | |
| | Aluminum | ≤14 | |
| | Copper | ≤10 | |
| Optimal cutting thickness (mm) | Carbon steel | ≤18 | EXTERNAL AIR |
| | Stainless steel | ≤18 | |
| | Aluminum | ≤14 | |
| | Copper | ≤10 | |

RAGNACUT 401 KOM

PACKAGE INCLUSIONS



RAGNACUT 401 KOM POWER SOURCE

CUTTING TORCH IPT-60 6M

EARTH CABLE 10mm² 4m & EARTH CLAMP 300A

RAGNACUT 401 KOM

ORDERING INFORMATION & OPTIONAL ACCESSORIES

RC.401.02P - RagnaCut 401 KOM Package

RC.401.02 - RagnaCut 401 KOM Power Source

IVT030430-00-B - Cutting Torch IPT-60 6m

RACC.1000001 - Earth Cable 10m² 4m & Earth Clamp 300A

RACC.G000001 - Gas Hose 3m With Quick Fit Connector

ISM0707 - Circle cutting attachment

*Images and specifications are for reference and are subject to changes/improvements without notice.